



WELCOME

**LET'S
GO SAFELY**

letsgosafely.com

WE'RE GOING PLACES. LET'S GO SAFELY.



WHAT IS SAFE STREETS FOR ALL (SS4A)?

Project Overview

The **SS4A Southern Nevada Action Plan** is a community-driven initiative led by the **Regional Transportation Commission of Southern Nevada (RTC)**. This plan aims to reduce traffic crashes across Clark County through public engagement, data-driven analysis, and temporary infrastructure improvements.

Project Purpose

The SS4A Southern Nevada Action Plan aims to **make Southern Nevada's roads safer and more accessible for everyone** by:

- **Engaging the Community** – Gathering input through surveys, walk audits, demonstration projects, and focus groups.
- **Using Data-Driven Insights** – Identifying high-risk and high-injury network areas as a strategy to prioritize potential safety improvements.
- **Implementing Strategic Solutions** – Enhancing roadway design elements such as temporary improvements to crossings, lighting, and speed management.
- **Focusing on all Communities** – Ensuring that the needs of all types of roadway users are identified and understood to ensure an opportunity for all to benefit from safer streets.
- **Collaborating for Long-Term Impact** – Working with local jurisdictions, community leaders, safety advocates and other stakeholders to drive lasting change.

WE'RE GOING PLACES. LET'S GO SAFELY.





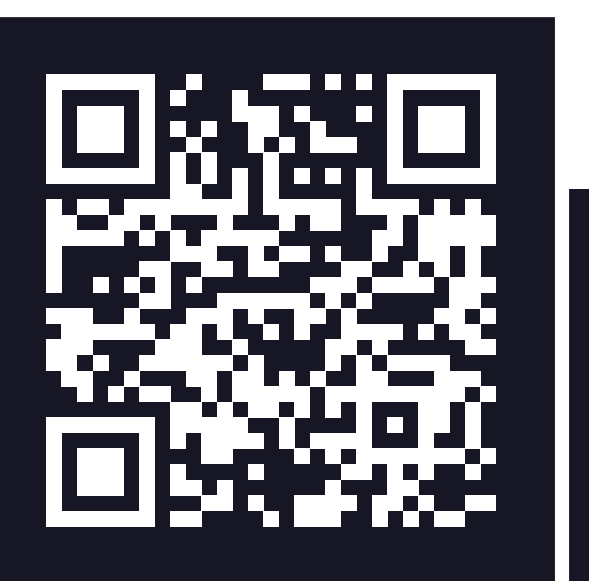
WHY IT MATTERS: THE NEED FOR ACTION

- **Rising Traffic Fatalities:** Traffic-related deaths are increasing, with vulnerable road users—pedestrians, cyclists, motorcyclists, and transit riders—disproportionately affected. In Clark County, **pedestrian fatalities increased by 14.46%, motorcyclist fatalities rose by 22%, and cyclist fatalities saw a 10% increase from 2023 to 2024.**
- **Infrastructure Needs:** Testing temporary improvements while measuring real-time safety data will help to identify future permanent projects that are effective.
- **Community Collaboration:** Input and feedback from Clark County roadway users is necessary to guide meaningful changes to roadway design to reduce crashes and improve safety.

Key Goals

- Reduce crashes and save lives.
- Pilot innovative safety solutions and make safety a top priority in all future roadway design projects.
- Implement a Safe Systems Approach, which emphasizes that all roadway users must play a role in improving safety..

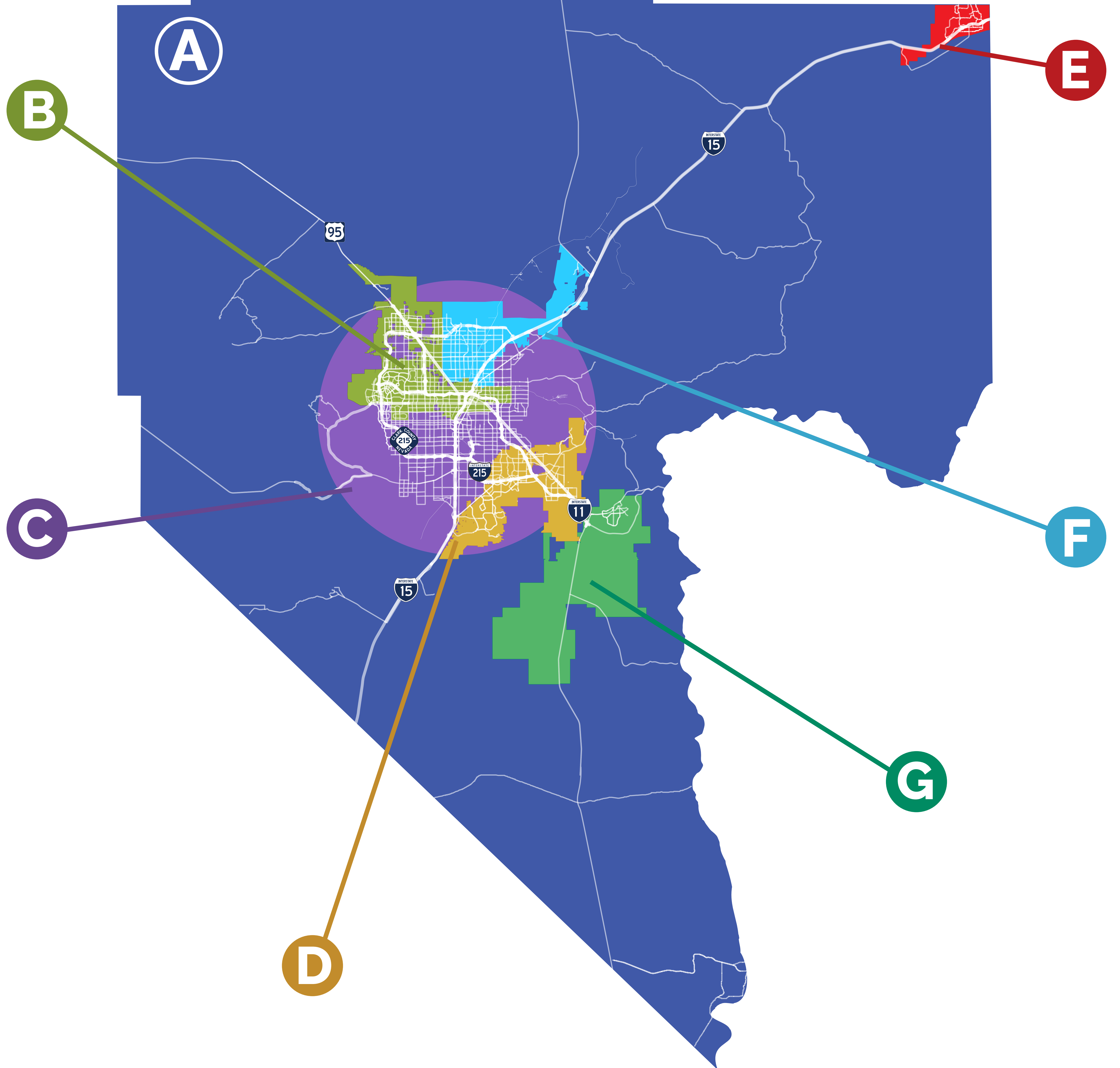
WE'RE GOING PLACES. LET'S GO SAFELY.





CLARK COUNTY PARTICIPATING JURISDICTIONS

- A** Rural Clark County/
NDOT-owned roadways
- B** City of North Las Vegas
- C** Urban Clark County
- D** City of Henderson
- E** City of Mesquite
- F** City of Las Vegas
- G** Boulder City



WE'RE GOING PLACES. LET'S GO SAFELY.





HIGH INJURY NETWORK (HIN) MAP & STATS

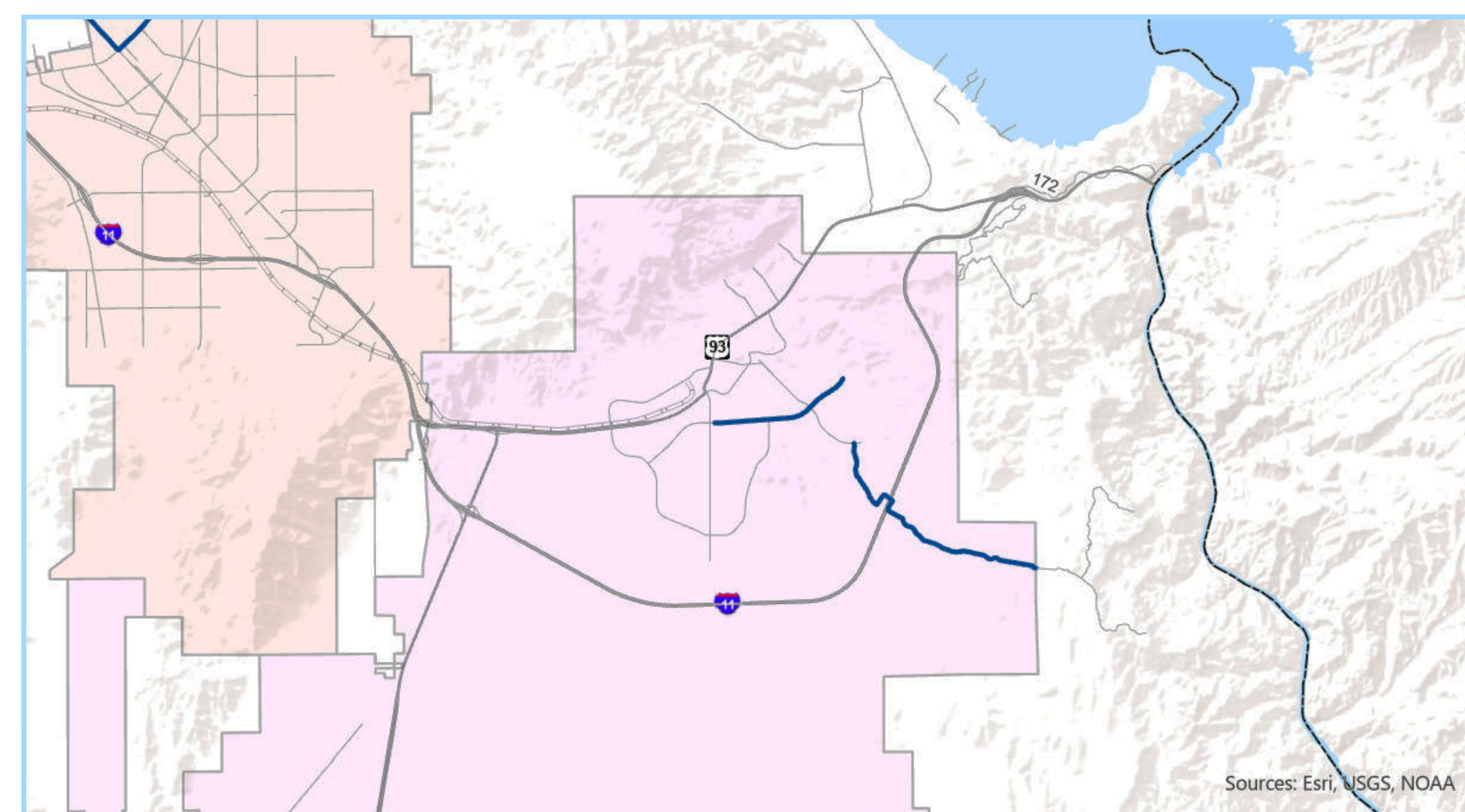
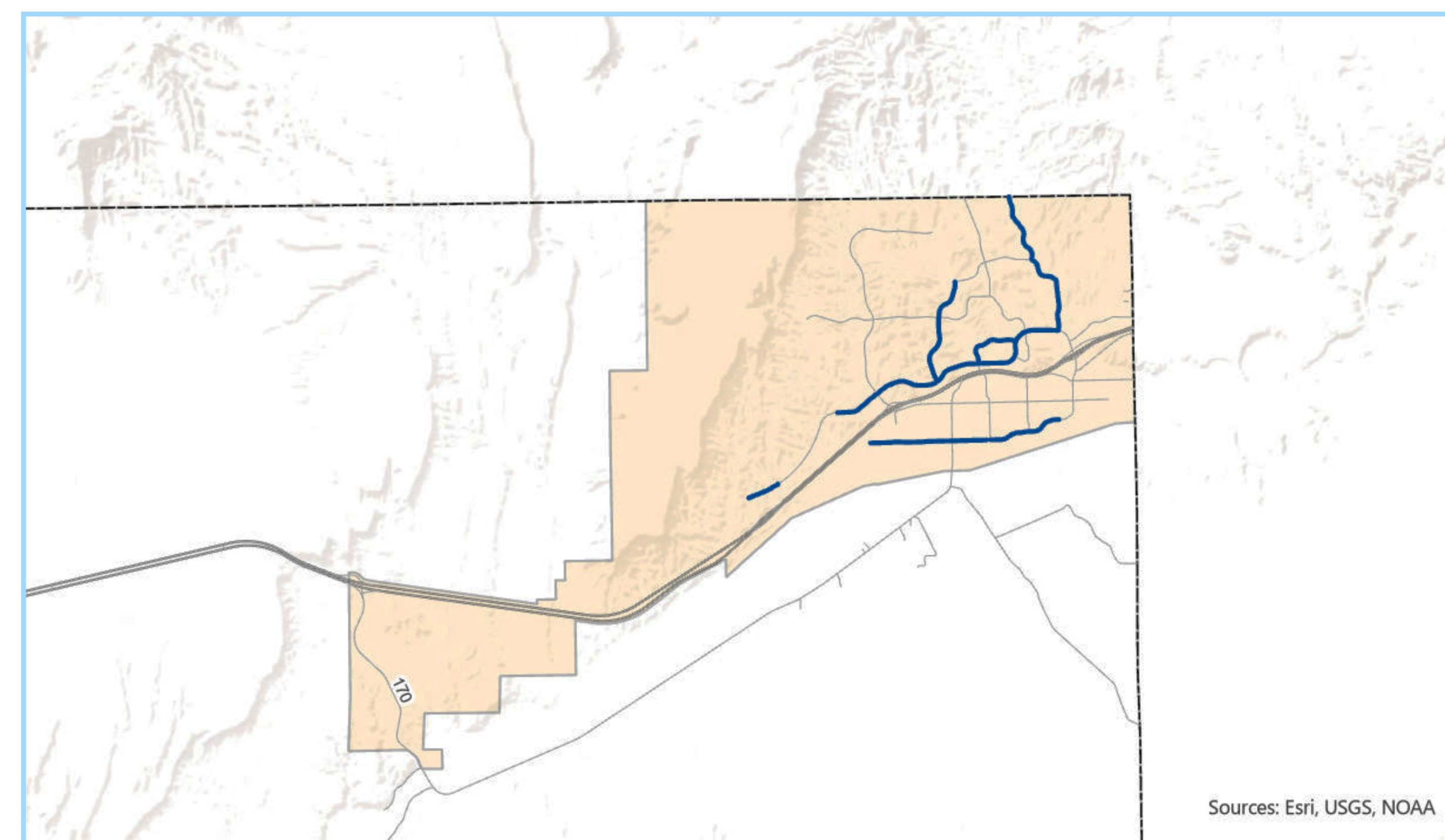
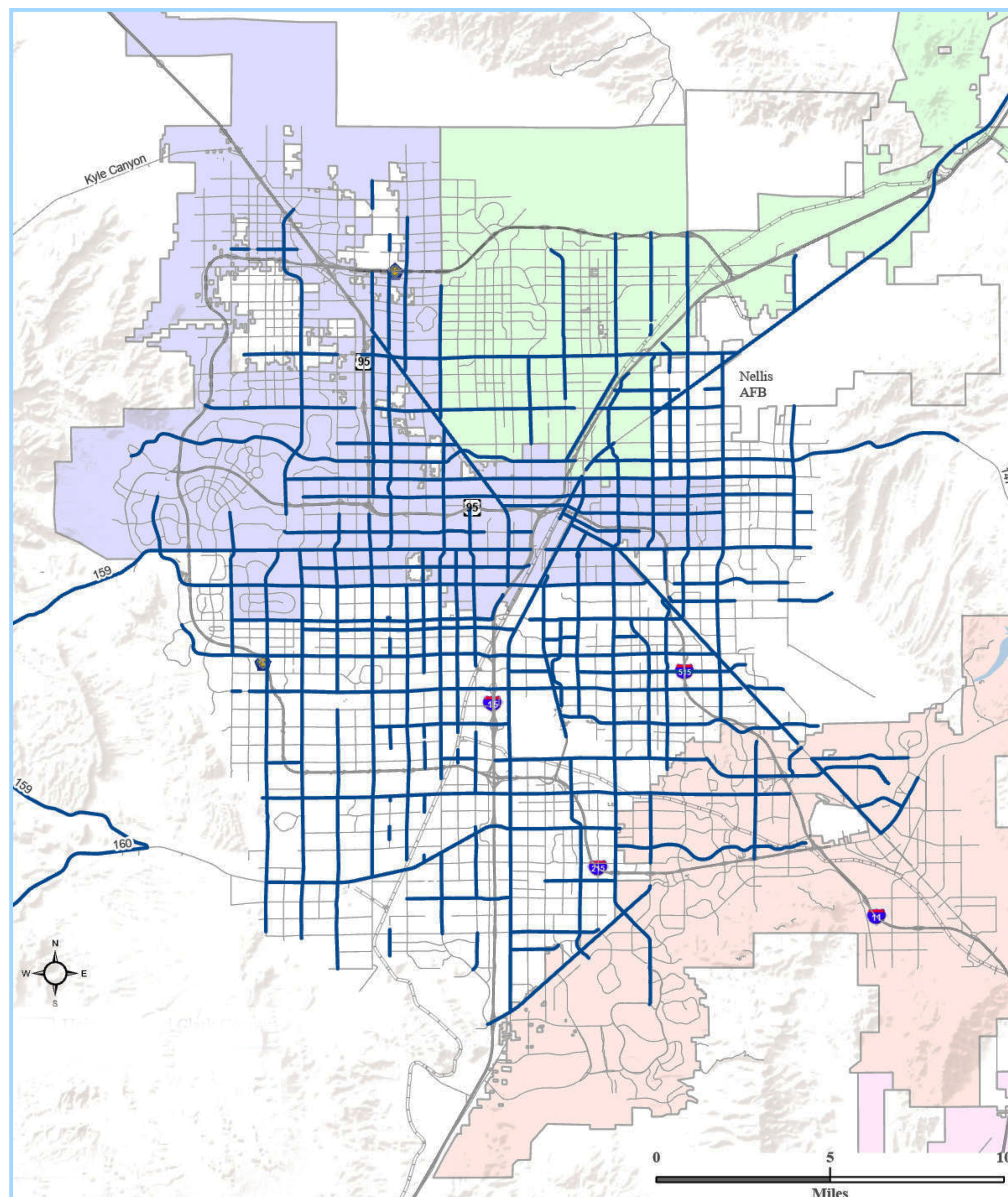
Key Crash Statistics for Clark County (2019-2022):

- 85,495 total crashes
- 623 fatalities
- 65,436 injuries
- 76% of crashes resulted in injury or death

Primary Crash Causes:

- Failure to yield
- Unsafe lane changes/reckless driving
- Hit-and-run
- Speeding
- Alcohol

High Injury Network (HIN) Map:



- This map identifies identifies roads and intersections with the highest fatalities and serious injury crashes.
- The data helps the RTC to prioritize safety improvements in high-risk areas.

- Unincorporated Clark County
- Las Vegas
- Henderson
- North Las Vegas
- Boulder City
- Mesquite
- RTC High Injury Network
- Clark County Boundary

WE'RE GOING PLACES. LET'S GO SAFELY.





WHAT ARE DEMONSTRATION PROJECTS, WALK AUDITS, AND FOCUS GROUPS?

Demonstration Projects

These temporary, low-cost safety improvements will allow the RTC to test potential permanent infrastructure changes. Projects will focus on traffic calming, and public feedback and data analysis will assess their effectiveness.

- **Up to seven demonstration projects to be installed throughout Clark County**
- **Improvements in place for 28 days**
- **Project installations begin in Fall 2025**

Examples of Potential Demonstration Projects

- Single Separated Bike Lane
- Curb Extensions
- Medians/Islands
- Single Lane Narrowing
- Roundabouts & Traffic Circles

Walk Audits

These guided community walks will identify and assess and identify safety concerns in pedestrian, roadway and cyclist infrastructure, such as sidewalks, crosswalks, and bike lanes.

- **Seven walk audits will occur across Clark County in fall 2025**

Focus Groups

Small group discussions with community members will help the project team to gather feedback and insights on transportation safety, needs, and solutions.

- **Seven focus groups will occur in Fall 2025 throughout Clark County**

WE'RE GOING PLACES. LET'S GO SAFELY.





HOW TO GET INVOLVED

TAKE OUR SURVEY:



Share your road safety experiences.

Stay informed and make an impact!

Your input will help shape the future of Clark County's roadway network.

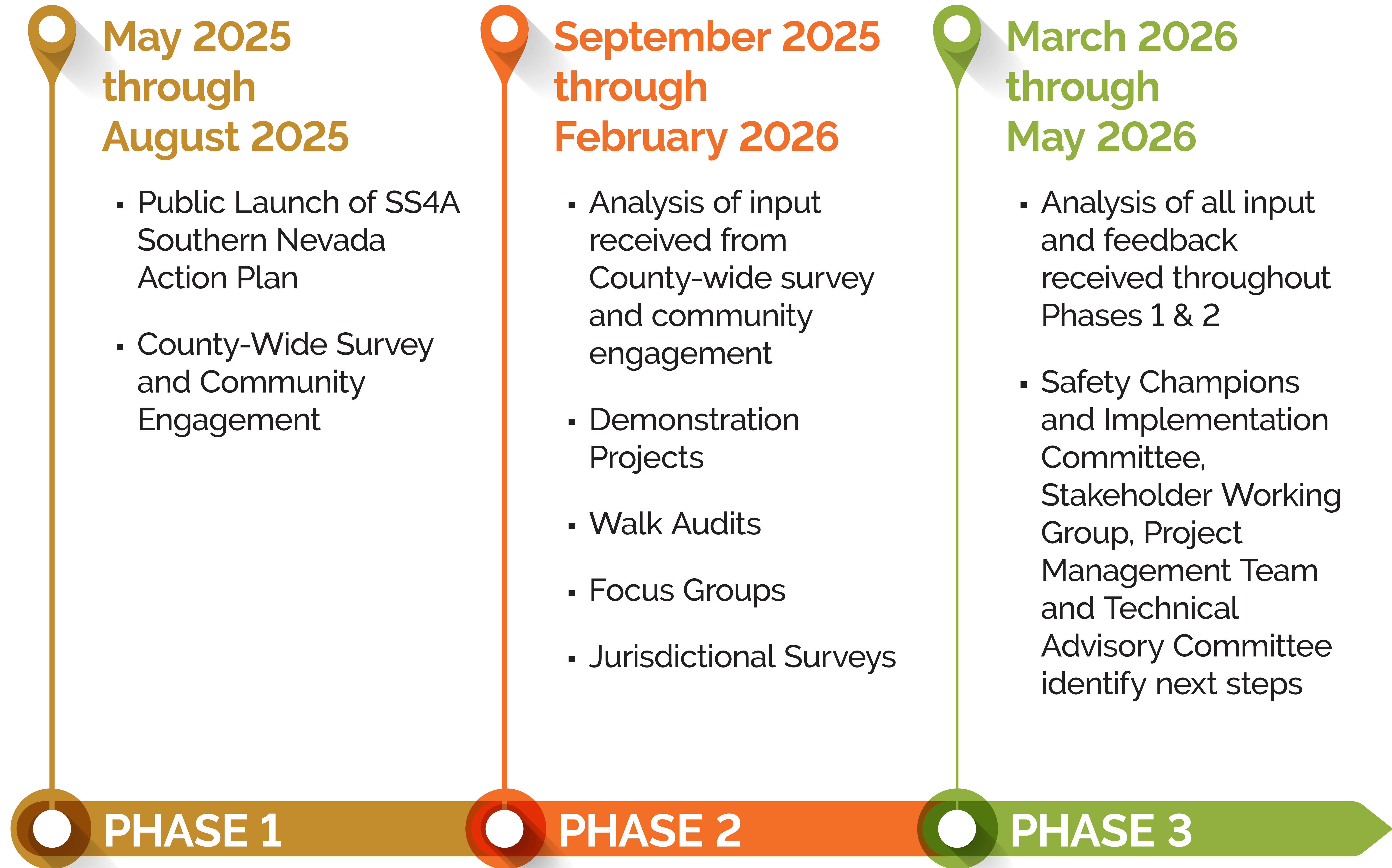
letsgosafely.com

Visit the website for more information and view a calendar of events





TIMELINE



WE'RE GOING PLACES. LET'S GO SAFELY.

